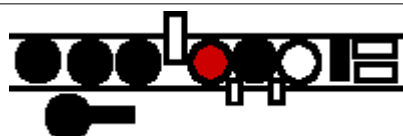
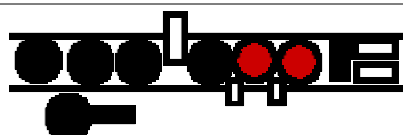
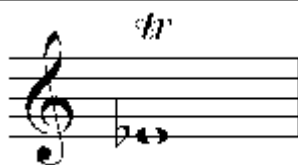
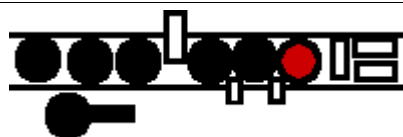


TRILLERTABELLE FÜR EINE BÖHMFLÖTE MIT GESCHLOSSENER GIS-KLAPPE

(TRILL FINGERINGS FOR A BÖHM FLUTE WITH CLOSED GIS-KEY)

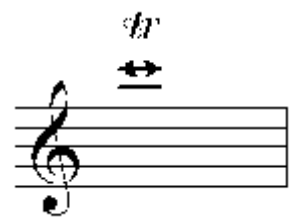
Die schwarzen Klappen sind zu schließen, die roten trillern. Die Unterscheidung der beiden Teile der Daumen-Doppelklappe wird nur dargestellt, wenn es für den Griff von Bedeutung ist. Triller, die hier nicht aufgeführt sind, werden einfach durch Wechsel der regulären Griffe gespielt.

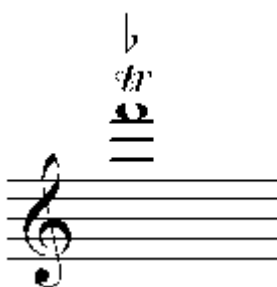
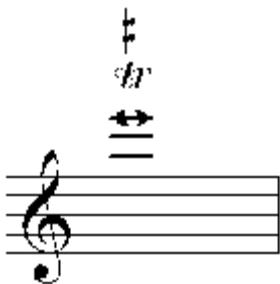
The black keys have to be closed, the reds are trilling. The two parts of the double thumb key are only differentiated if it is important for the fingering. Trill not listed here are played by changing between the regular fingerings.

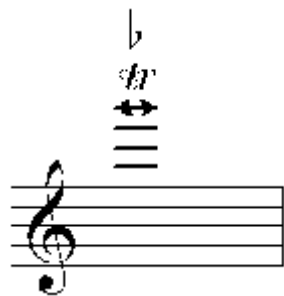


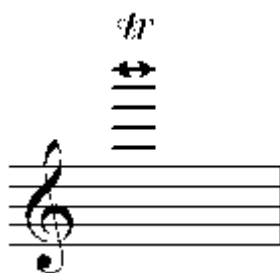












Position der Finger auf den Klappen (blau: linke Hand, rot: rechte Hand) / Position of the fingers on the keys (blue: left hand, red: right hand):



- Z - Fore finger
- M - Middle finger
- R - Ring finger
- K - Little finger
- D - Thumb