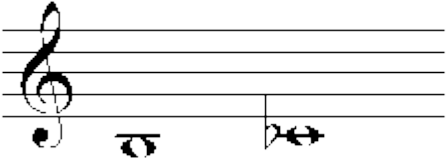



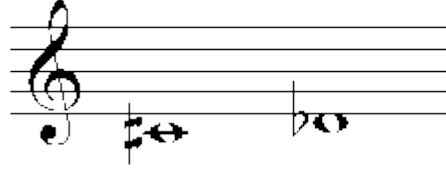

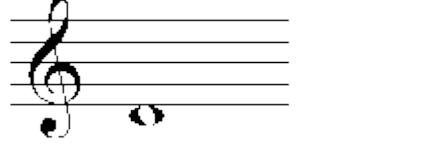



Grifftabelle für eine Böhmlöte mit geschlossener Gis-Klappe

(Fingerings for a Böhm flute with closed gis-key)

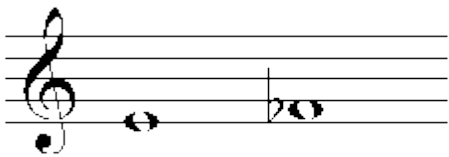
Die schwarzen Klappen sind zu schließen. Die Unterscheidung der beiden Teile der Daumen-Doppelklappe wird nur dargestellt, wenn es für den Griff von Bedeutung ist.

The black keys have to be closed. The two parts of the double thumb key are only differentiated if it is important for the fingering.

	<i>h/Ces1</i>	
	C1/his	
	Cis1/Des1	
	D1	



Dis1/Es1



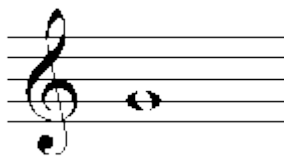
E1/Fes1



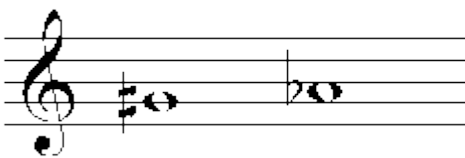
F1/Eis1



Fis1/Ges1



G1


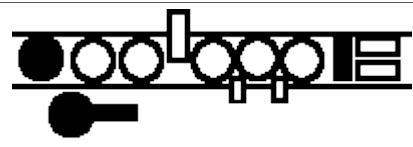

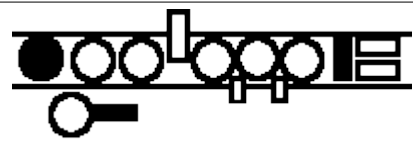
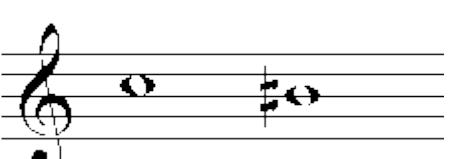
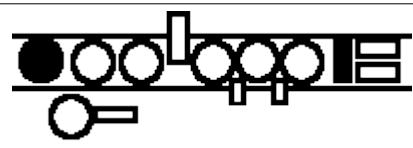
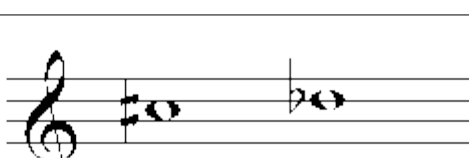

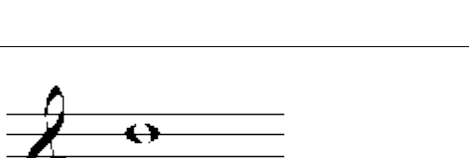

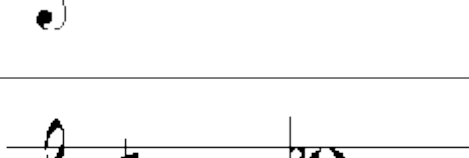

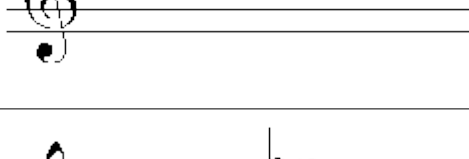



Gis1/As1



A1



	Ais1/B1	
	H1/Ces1	
	C1/His1	
	Cis2/Des2	
	D2	
	Dis2/Es2	
	E2/Fes2	

Musical notation for F2/Eis2: Treble clef, one whole note on the second line (F2) with a natural sign, and another whole note on the second space (Eis2) with a natural sign.

F2/Eis2

Musical notation for Fis2/Ges2: Treble clef, one whole note on the second space (Fis2) with a sharp sign, and another whole note on the second line (Ges2) with a natural sign.

Fis2/Ges2

Musical notation for G2: Treble clef, one whole note on the second space (G2) with a natural sign.

G2

Musical notation for Gis2/As2: Treble clef, one whole note on the second space (Gis2) with a sharp sign, and another whole note on the second line (As2) with a natural sign.

Gis2/As2

Musical notation for A2: Treble clef, one whole note on the second space (A2) with a natural sign.

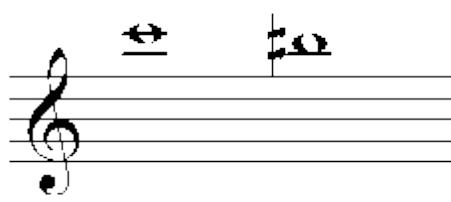
A2

Musical notation for Ais2/B2: Treble clef, one whole note on the second space (Ais2) with a sharp sign, and another whole note on the second line (B2) with a natural sign.

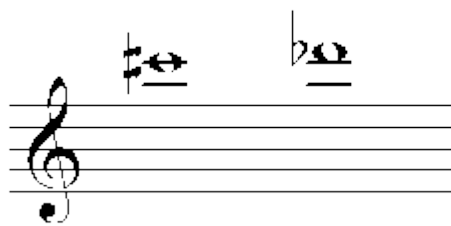
Ais2/B2

Musical notation for H2/Ces3: Treble clef, one whole note on the second space (H2) with a natural sign, and another whole note on the second line (Ces3) with a flat sign.

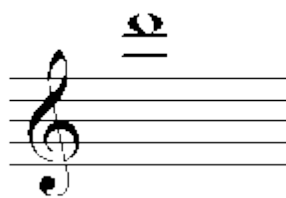
H2/Ces3



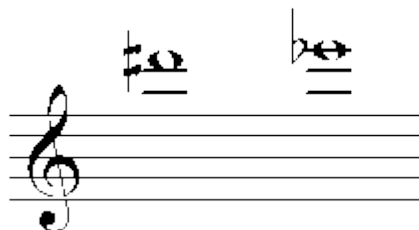
C3/His2



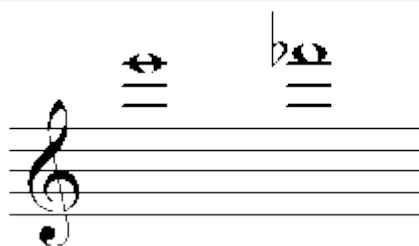
Cis3/Des3



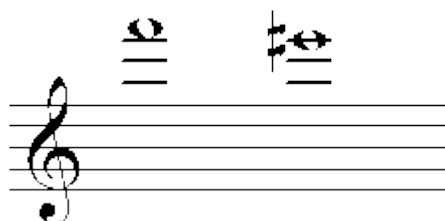
D3



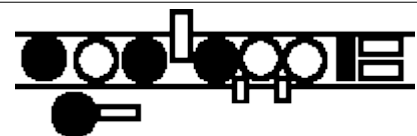
Dis3/Es3

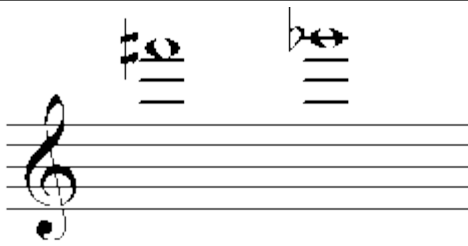


E4/Fes3

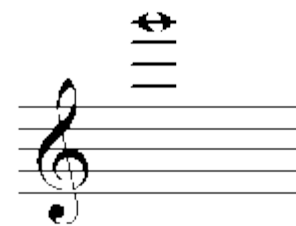


F3/Eis3

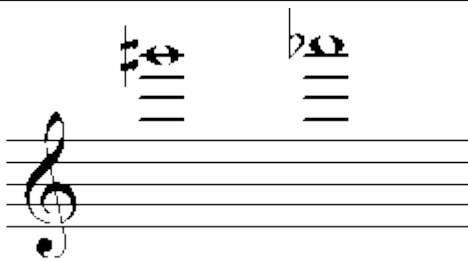




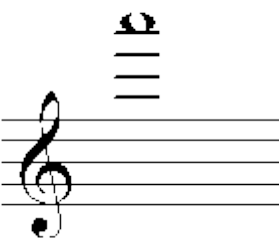
Fis3/Ges3



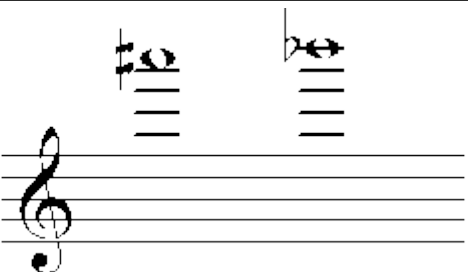
G3



Gis3/As3

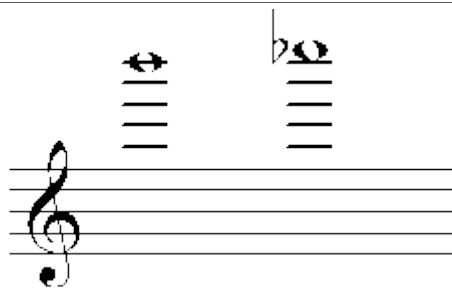


A3

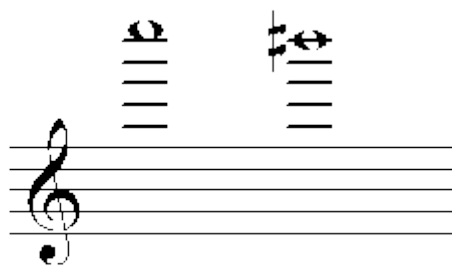


Ais3/Hes3





H3/Ces4



C4/His4



Position der Finger auf den Klappen (blau: linke Hand, rot: rechte Hand)/Position of the fingers on the keys (blue: left hand, red: right hand):



Z – Fore finger
M – Middle finger
R – Ring finger
K – Little finger
D - Thumb